

MILTON & KING®

# Wallpaper Hanging Instructions

MATTE NON-WOVEN

SINGLE ROLL



Scan for installation  
guides, technical  
specifications and more.



**IMPORTANT: DO NOT CUT OR INSTALL UNTIL YOU HAVE READ THESE INSTRUCTIONS IN FULL. CONTACT US FOR ANY QUESTIONS OR CONCERNS.**

## PRIOR TO INSTALLATION:

Check your order to ensure that you have received the correct pattern, color and quantity. Inspect the material for any defects prior to installation. Claims will not be considered on cut material, or installed material after three (3) panels have been hung.

## WALL PREPARATION:

All surfaces to be receiving the wallcovering should be smooth, clean, dry and structurally sound. Ensure that the wall's residual moisture content does not exceed 4% by using a reliable moisture meter. Do not proceed with the installation if the walls show any signs of mold, mildew, moisture damage, or exceeds the recommended moisture content level. Remove all traces of dirt, old wallpaper and flaking paint. If required, using a suitable filler, even out cracks and irregularities to achieve a satisfyingly smooth surface.

Sand and prime filled areas - priming will seal the filler and stop it from drying at a different rate. Unprimed filler can cause the paper to bubble as it draws all the moisture from the paste.

Do not hang wallpaper on new plaster or walls that are absorbent, such as concrete. Walls must be primed in advance to make sure that the wall is sealed and the wallpaper paste is not absorbed into the surface.

Existing wallcoverings should be stripped and old adhesive should be removed with an appropriate adhesive remover. Rinse the wall and allow to dry completely prior to priming.

**NOTE: ENSURE ALL FILLERS, PRIMERS AND PAINT ARE COMPLETELY DRY PRIOR TO INSTALLATION. REFER TO SUPPLIER INSTRUCTIONS FOR SPECIFIC DRYING TIMES.**

Surfaces other than drywall or plaster may require special instructions for installation. Contact us for recommendations prior to beginning installation.

## APPLICATION:

Non-woven wallpaper should be dry hung by applying the adhesive to the wall surface. We recommend ROMAN PRO-838 HEAVY DUTY or ZINSSER SURE GRIP HEAVY DUTY tub adhesives at full strength - DO NOT DILUTE.

## IMPORTANT CONSIDERATIONS:

1. Our uncoated matte wallpapers and grasscloths are not suitable for bathrooms, kitchens, or other high-humidity areas. If you plan to decorate a humid or wet room, we recommend ordering our coated wallpapers, or our Type II commercial vinyl instead.
2. Local conditions will differ from room to room, depending on size, extraction, and general humidity, all of which result in varying levels of condensation. As such, we cannot guarantee suitability across all situations.
3. Air the room! Remember to never shut up a room of newly hung wallpaper, but leave to air and maintain a normal room temperature to ensure the wallpaper dries properly. The room and wall should be kept at a minimum of 64°F or 18°C.

## POTENTIAL INSTALLATION ISSUES:

1. Raised edges and blistering: These common problems are not due to the wallpaper, but rather to the amount of adhesive used. Be sure to apply a generous, even coat of paste to the wall, making sure to cover just over one width's worth of surface to ensure adhesive reaches to the edge. This also allows the paper to slip, making installation a little easier.
2. Visible seams: This problem occurs due to not aligning the seams/smoothing the surface correctly during installation. It's also important to never 'stretch' the wallpaper in order to butt the seams. If you make a mistake, either gently push the paper from the middle of the panel towards the seam, or, rather than overwork the paper, remove the panel from the wall completely and reapply in the correct position.

## CLEANING & CARE:

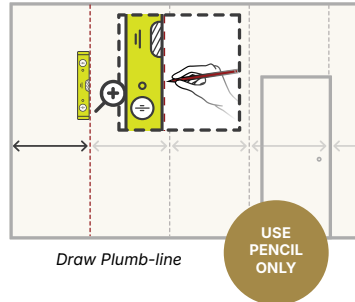
All wallpapers are spongeable using a damp cloth or soft sponge. Rinse with clear, clean water. Stains caused by grease and oil may not necessarily be removed. **Our wallpaper is a delicate material that will not withstand abrasion. Do not use abrasive materials, microfibre cloths or similar items. DO NOT RUB.**

The information given here or any other technical advice, whether verbal or in writing or by way of trial is for guidance only, and is given in good faith but without warranty, since the skill of application and site conditions are beyond our control.

# MILTON & KING®

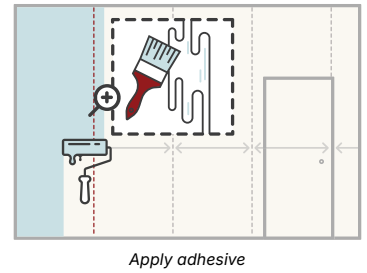
## STEP 1

First, chop the header off your roll. You can use this as a template to measure the width required for your drops. Using the header, measure the amount out from the corner in the direction of installation, minus half an inch (1.5cm). Put a mark close to the ceiling at this point. This is where you start your spirit-level or plumb-line from and will allow half an inch overlap around the corner. Mark down the plumb-line every 11-15" (30-40cm). This will give you a good vertical line to hang your first length to.



## STEP 2

Start by pasting an area sufficient enough to cover just over one drop width at a time. Use a paintbrush to cut-in around areas too tight for the roller (e.g. at the ceiling line, corners, and along baseboards and trim).

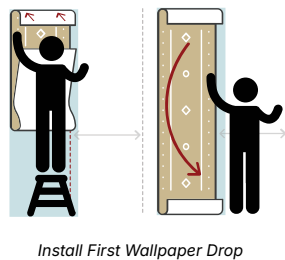


## STEP 3

When moving the wallpaper to the wall, fold the length together in the middle (carefully as not to create a crease) with the pattern inwards in order to avoid getting adhesive on the front of the wallpaper.

Attach the top of the length to the wall at the preferred height and in the correct position before letting go of the rest. Allow 2-3" (5-8cm) of overlap above the drop to ensure an accurate finished trim. Align the top and bottom of the first length before "smoothing down" the wallpaper.

If you make a mistake, remove the length and start over. Apply more adhesive if the first coat has dried.



AVOID RUBBING THE SURFACE OF THE WALLPAPER DURING INSTALLATION

## STEP 4

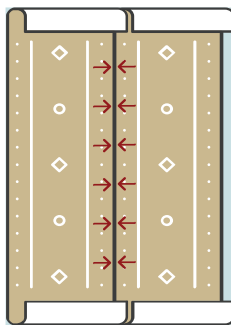
To get rid of air pockets, use a clean roller, sponge or brush (**avoid abrasive materials, microfibre cloths or similar items**), taking care not to squeeze out the paste between the joins and ensure the paste does not get onto the smoothing roller or sponge. Do not rub.

Work from the ceiling to the floor and from the middle to the edges. Do not use any hard tool or abrasive material that would damage the surface.



## STEP 5

Butt join the next length of wallpaper to the first, matching up the edges according to the header (straight, offset or free match). Ensure that the lengths are properly positioned, that the pattern is matching, and that there is no surface visible at the joints. It is important that adhesive is applied right to the edge of the wallpaper to ensure the lengths adhere correctly.

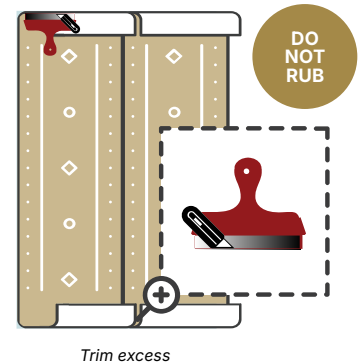


## STEP 6

When you are happy with the position, use a straight edge and a sharp snap-off knife blade to trim the excess wallpaper at the top and bottom of the wall. Replace the blade often, as a dull blade can easily tear the wallpaper.

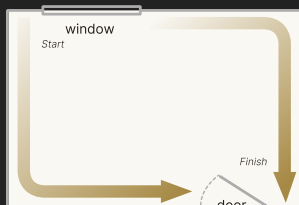
**REPEAT STEPS 2 - 6 ACROSS THE WALL UNTIL INSTALLATION IS FINISHED.**

Gently wipe off any residual paste with a soft, damp cloth, being careful not to apply too much pressure.



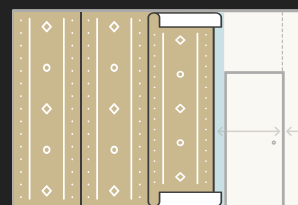
Carefully inspect the wallcovering after three (3) strips have been hung to ensure there are no defects. We are unable to facilitate any claims after three (3) panels have been hung.

## HELPFUL TIPS



### RECOMMENDED INSTALLATION DIRECTION

When installing wallpaper, always work away from the main source of light and finish in the least conspicuous corner.



### WIPE RESIDUAL PASTE & WATER FROM WALLPAPER

Use a soft, clean, dry cloth to gently remove residual water after cleaning to prevent marking.